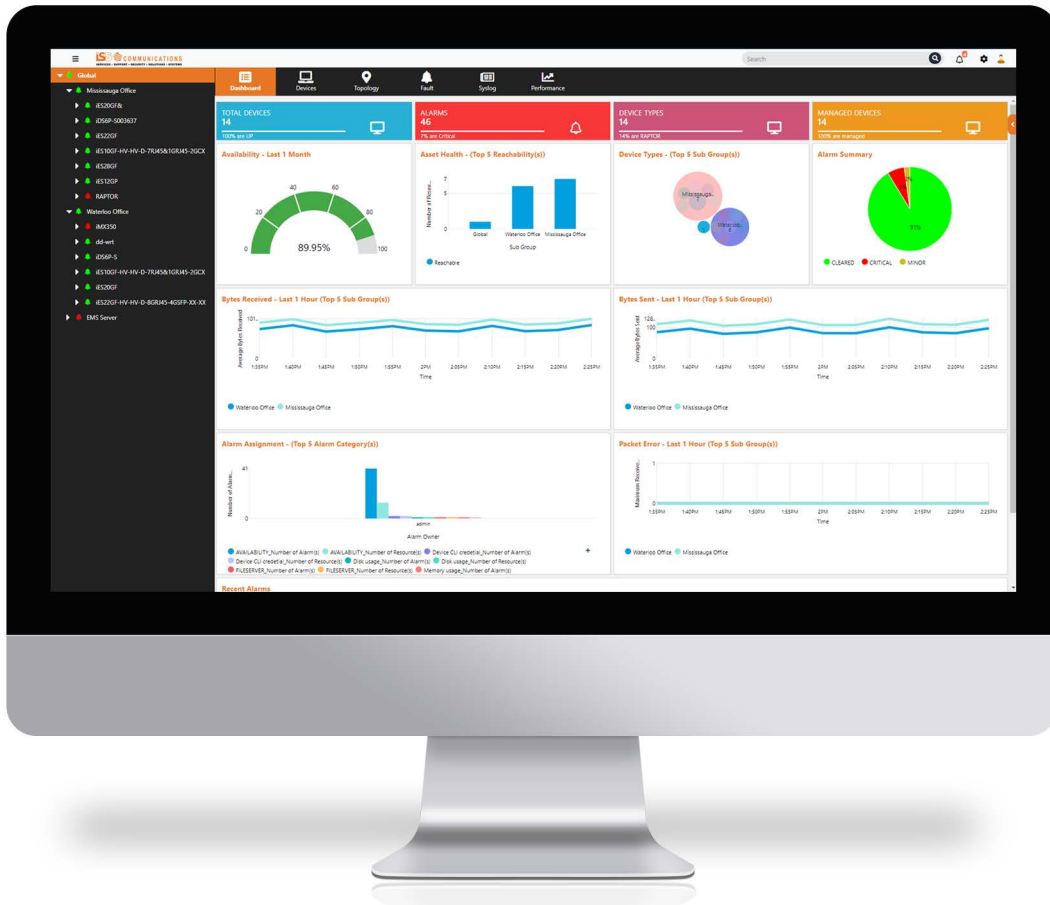


RAPTOREye Windows Installation Guide



Version 1.9.0, June 2022



© 2022 i5 Communications Inc. All rights reserved.

Contents

	RAPTOREye Windows Installation Guide	i
Chapter: 1	Overview	1
	Upgrade Support	1
	Introduction	2
Chapter: 2	Prerequisites	3
	RAPTOREye Prerequisites	3
Chapter: 3	Requirements	4
	RAPTOREye Binaries	4
	Software Requirements	6
	Supported Web Browsers	6
Chapter: 4	Installing RAPTOREye - New Installation	7
Chapter: 5	Installing RAPTOREye - Upgrade Installation	14
Chapter: 6	Start RAPTOREye Server	20
Chapter: 7	Stop RAPTOREye Server	21

1. Overview

This document provides installation and upgrade instructions for the following products.

Product Name	Version	Release Date
RAPTOREye	1.9.0	June 2022
RAPTOREye	1.8.0	March 2022
RAPTOREye	1.7.1	December 2021
RAPTOREye	1.7.0	September 2021
RAPTOREye	1.6.0	June 2021
RAPTOREye	1.5.1	April 2021
RAPTOREye	1.5.0	March 2021
RAPTOREye	1.4.0	December 2020
RAPTOREye	1.3.0	September 2020
RAPTOREye	1.2.0	June 2020
RAPTOREye	1.1.0	March 2020
RAPTOREye	1.0.0	December 2019

1.1. Upgrade Support

This document contains upgrade procedures supporting the following.

Product Name	From Version	To Version
RAPTOREye	1.8.0	1.9.0
RAPTOREye	1.7.1	1.9.0
RAPTOREye	1.7.0	1.9.0
RAPTOREye	1.6.0	1.9.0
RAPTOREye	1.5.1	1.9.0
RAPTOREye	1.5.0	1.9.0
RAPTOREye	1.4.0	1.9.0

Product Name	From Version	To Version
RAPTOREye	1.3.0	1.9.0
RAPTOREye	1.2.0	1.9.0
RAPTOREye	1.1.0	1.9.0
RAPTOREye	1.0.0	1.9.0

1.2. Introduction

The RAPTOREye Windows Installation Guide contains the information and steps required to install RAPTOREye on Windows.

Please read each section carefully and ensure completing all steps before proceeding further with the installation.

RAPTOREye supports two types of installation:

- New Installation
- Upgrade Installation

2. Prerequisites

This section lists the prerequisites for installing RAPTOREye.

2.1. RAPTOREye Prerequisites

- Microsoft Visual C++ Redistributable for Visual Studio 2019
 - The latest version can be downloaded here: <https://visualstudio.microsoft.com/downloads/>
- The following ports are open and available:

Port	Protocol
22	SFTP
69	TFTP
80	HTTP
161	SNMP
162	SNMP Trap
443	HTTPS
514	Syslog
3528	Management osgi-http
4447	Remoting Connector
4712	Transaction Recovery Environment
4713	Management HTTP & HTTPS, Transaction Status Manager
8009	AJP Connector
9990	Management HTTP
9999	Management Native
55432	PostgreSQL

NOTE: When performing an upgrade, close all programs and files accessing the RAPTOREye server.

3. Requirements

This section lists the requirements for installing RAPTOREye.

3.1. RAPTOREye Binaries

The following files are the official releases of RAPTOREye:

File	Checksums
RAPTOREye-WindowsInstaller-1.9.0.exe	SHA-256 3cb101be7d8064dbd90807055f8576c64735bbfc7e7d00e27607a61a7aed4794 SHA-1 3dd71c339033725cff01b40a7daf40b45705c5ce
RAPTOREye-WindowsInstaller-1.8.0.exe	SHA-256 87046f5bc618fa6adcbe358da95c8d7dc6c0bcec80f631f9cb50d577145c5962 SHA-1 25a03b4cf0f4fa79334a09ccf8436ca818674980
RAPTOREye-WindowsInstaller-1.7.1.exe	SHA-256 173e5fa9f1a7525e99f449469f577b08757eab249d0103f4dfcd79bef79aac06 SHA-1 166cf79c39623891367fb709cde0b03475419467 MD5 41ffdba7e585fffa84b46edb42ae304a
RAPTOREye-WindowsInstaller-1.7.0.exe	SHA-256 451f82a4b10c6669ff6f8120da2c28ab25d0c997b78d4620be0b2470e9e9154f SHA-1 2299107173fc50e76bdbbf993c960d9e82b44147 MD5 532704cc8f49e2928a17b5c440ca988c
RAPTOREye-WindowsInstaller-1.6.0.exe	SHA-256 830a9e5255c64e8f999a72072bad66540ec02122a2383690acd2255cd76d8e1e SHA-1 25c1532f072f4e8ce085cef3a5b7765f768d2d9c MD5 fe667356f8b2e08ac405ca9b68f95e9d

File	Checksums
RAPTOREye-WindowsInstaller-1.5.1.exe	SHA-256 a22039d74f438afe876ae537b61112bae4a65bd8a56ae6df257ef1a7b5891451 SHA-1 39e7b617288a4190c0467e5b744aa8c784017c1c MD5 703589a5b95f413f5cc2a4a3ca079cb0
RAPTOREye-WindowsInstaller-1.5.0.exe	SHA-256 3b26d7da02241fac5d0ea9451aab6210367aff241629045eea92365ac68db567 SHA-1 0062c7f8968eea1545b38c62ecc8f84543d82bd9 MD5 7349a6e2c9f1ff028fe11d3a1d5bb867
RAPTOREye-WindowsInstaller-1.4.0.exe	SHA-256 12c90a42a15c3c9545ebce92b393e9034e624fde5483b2649fc386446f0cd701 SHA-1 06459dd2dcc3d88917fc0c036167093e2459c9ff MD5 c0e6c9240e5ce1411f946cc72bb0d54f
RAPTOREye-WindowsInstaller-1.3.0.exe	SHA-256 f3aab12df88369300fdfa1c30b47326dfa6b39ccfd5137520795e5394f7049d SHA-1 8d98b562afca559f1b2d8c3c942aa3bd57412f22 MD5 d2ddef55d7b1edd58f2135b4bebd27b9
RAPTOREye-WindowsInstaller-1.2.0.exe	SHA-256 7ae2a2d84a7110efbb753adf5580bf95add5af62095151678df21c5f5999c87e SHA-1 0ff133f45e321a926d93694922b6f7e2a3bb95e6 MD5 912c6cb12a62844ec4e27d539764a8bb

File	Checksums
RAPTOREye-WindowsInstaller-1.1.0.exe	SHA-256 bc2fc038f1ef342a6b0c69bba762ed02c2c781ba5ff022a9d97b8aff0942cd69 SHA-1 91d7f2f123e07f9f90baf1a4678ca2dad10339c0 MD5 e8ec128f1b89ac9215de2e89f7fefb16
RAPTOREye-WindowsInstaller-1.0.0.exe	SHA-256 2d728c42df784345679a794ae35cc84308ead4327cffdfb924cd5ecf56044aaa SHA-1 9c6e73a0cc2bf16f25406a6648da464dea5a4132 MD5 f82281fb3063646dec3376b17eff3c1d

3.2. Software Requirements

RAPTOREye can run on the following versions of Windows:

- Windows Server 2019
- Windows Server 2016
- Windows 10 (64-bit)—recommended for Demo/Trial versions only

3.3. Supported Web Browsers

RAPTOREye supports the following web browsers:

- Mozilla Firefox: <https://www.mozilla.org/en-US/firefox/new/>
- Google Chrome: <https://www.google.com/chrome/>

It is recommended to use a screen resolution of 1366 x 768 or higher.

4. Installing RAPTOREye - New Installation

This section describes how to install RAPTOREye on Windows as a new installation.

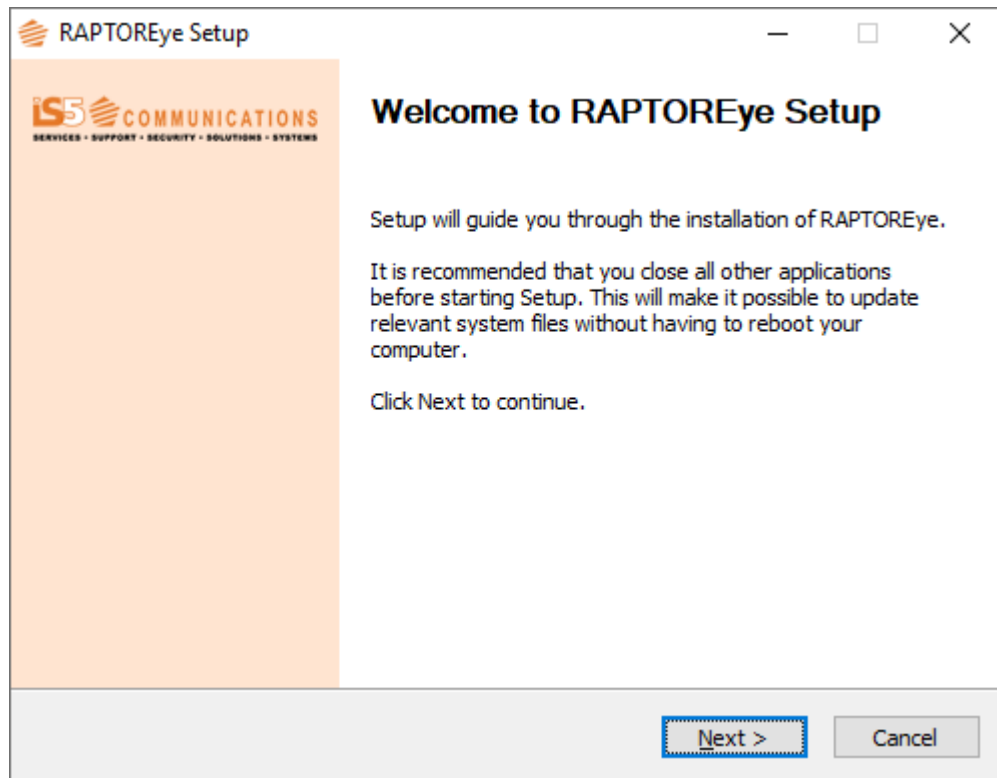
CONTEXT:

The following steps are involved in a new installation of RAPTOREye:

1. Uninstall the RAPTOREye server if previously installed.
2. Login as an **Administrator** privileged user to perform the installation or run the Installer using the **Run as Administrator** option.
3. Run the RAPTOREye installer.

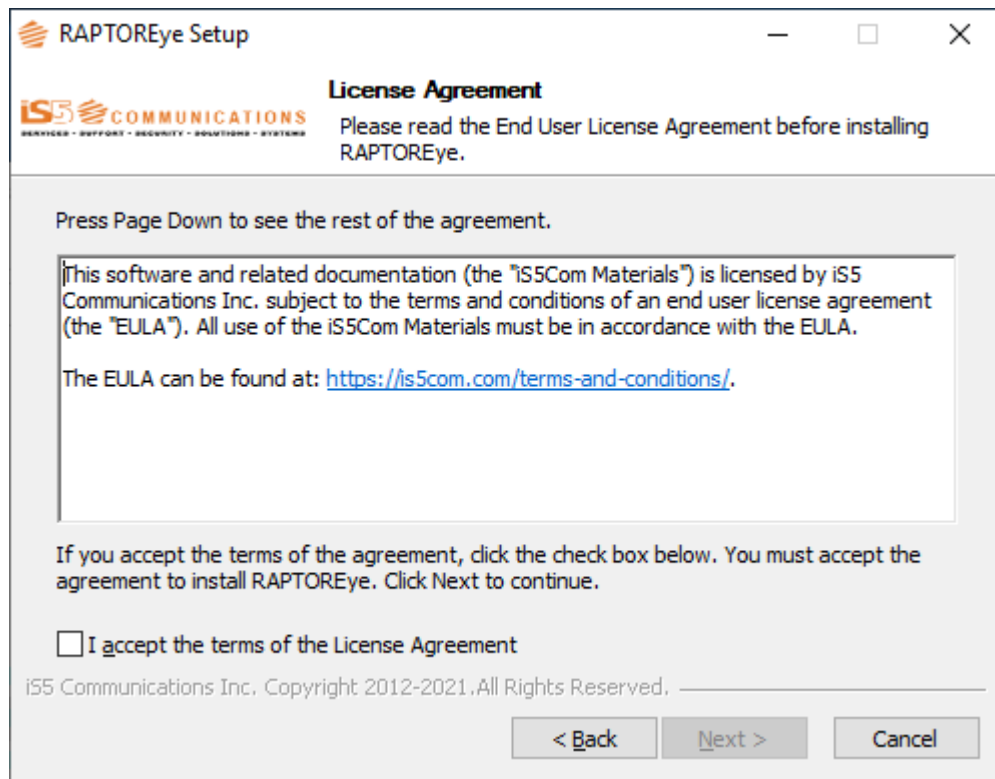
FOR EXAMPLE: RAPTOREye-WindowsInstaller-1.9.0.exe

STEP RESULT: The following image will appear:



4. Click **Next**.

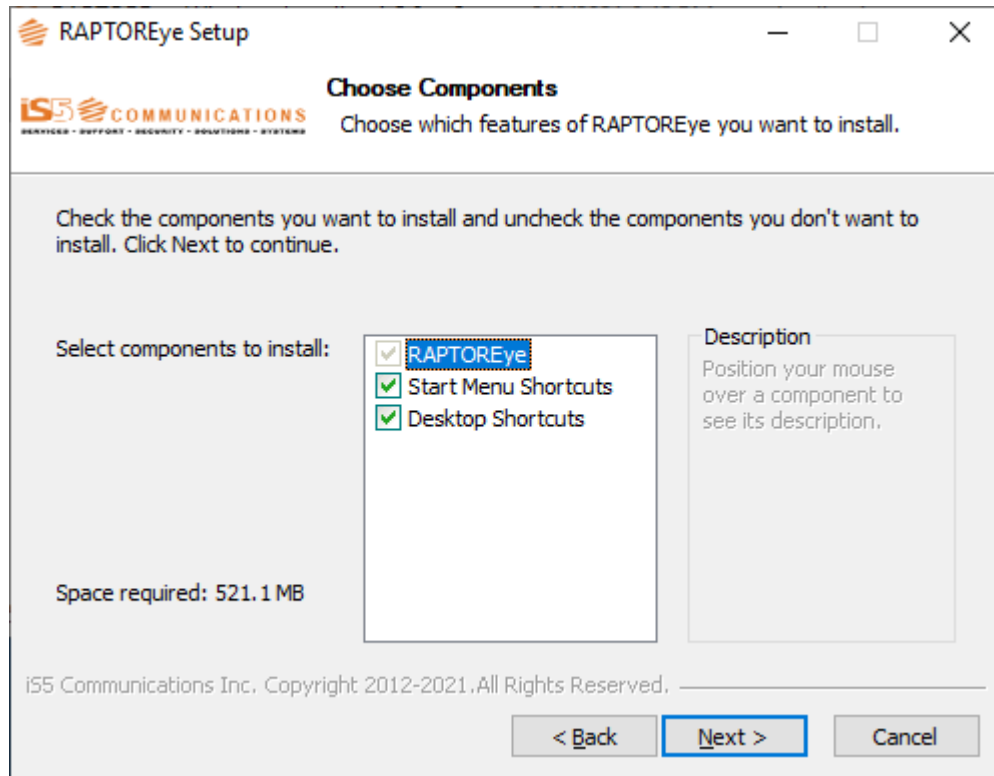
STEP RESULT: The following image will appear:



5. Read the License Agreement and select the checkbox which says **I accept the terms of the License Agreement**. Click **Next**.

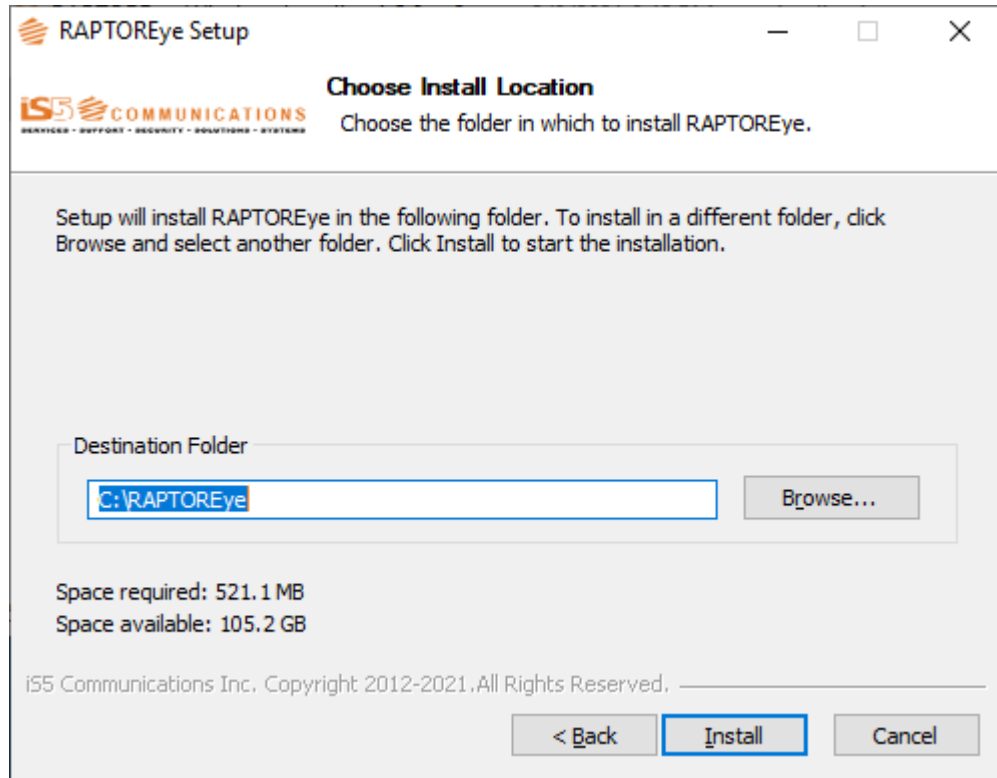
Note: The full RAPTOREye License Agreement can be found at the following URL:
<http://is5com.com/terms-and-conditions/>

STEP RESULT: The following image will appear:



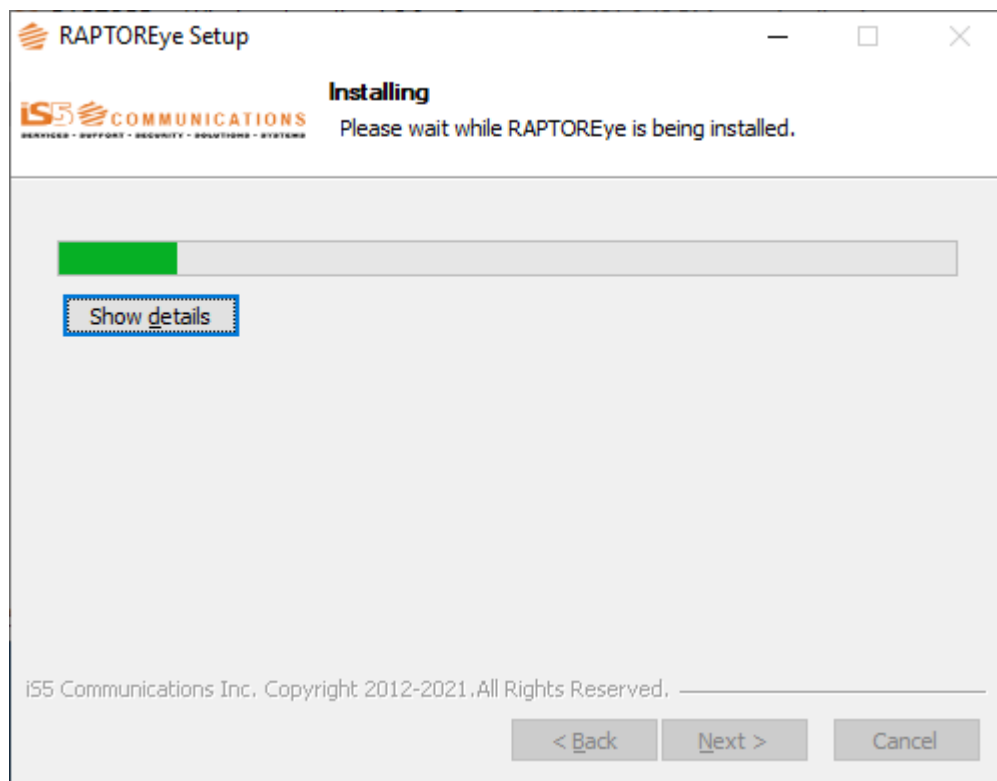
6. Start **Menu Shortcuts** and **Desktop Shortcuts** are optional and will be created by default. If desired, you may deselect one or both options. Once your desired options are selected, click **Next**.

STEP RESULT: The following image will appear:



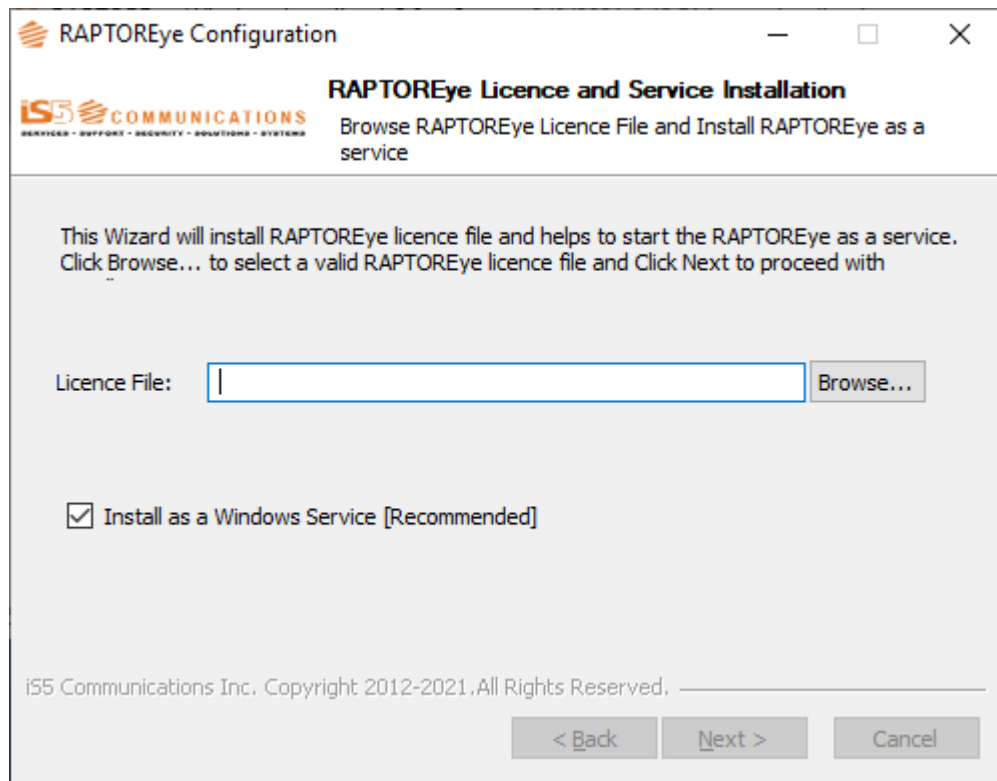
7. Choose the installation location and click **Install**.

STEP RESULT: The following image will appear:



8. Once the installation has been completed, you will be prompted to select a license file.

STEP RESULT: The following image will appear:

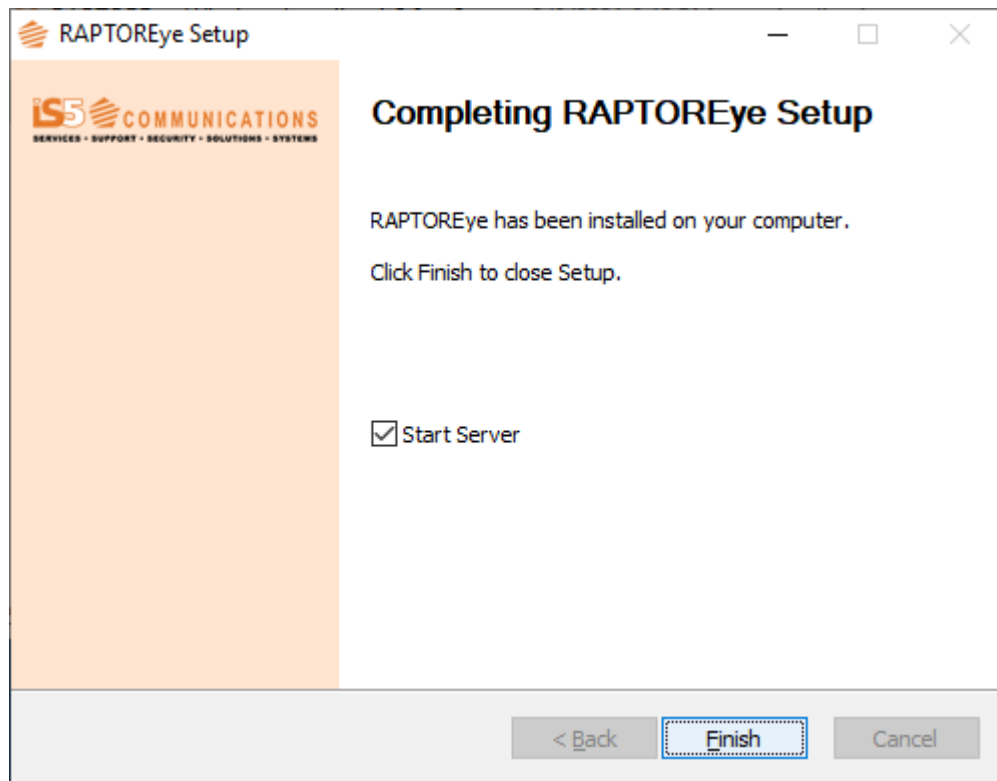


9. Select **Browse** and browse to select your RAPTOREye license file and click **Next**.

Note: RAPTOREye will be installed as a Windows Service by default. It is recommended to use this option in a production environment to have the application run in the background.

You have an option to install RAPTOREye as a user application by deselecting the **Install as a Windows Service** checkbox. This is only recommended for demo systems.

STEP RESULT: The following image will appear:



10. By default, the RAPTOREye server will be started automatically. You may choose to start the server later by deselecting the **Start Server** checkbox. To complete the RAPTOREye Setup Wizard, click **Finish**.

STEP RESULT: The installer window will close and the service will be started in the background if the **Start Server** checkbox was selected.

RESULT:

RAPTOREye has now been successfully installed.

5. Installing RAPTOREye - Upgrade Installation

This section describes how to upgrade RAPTOREye on Windows.

PREREQUISITE:

A previously released version of RAPTOREye has been installed on the system you intend to upgrade.

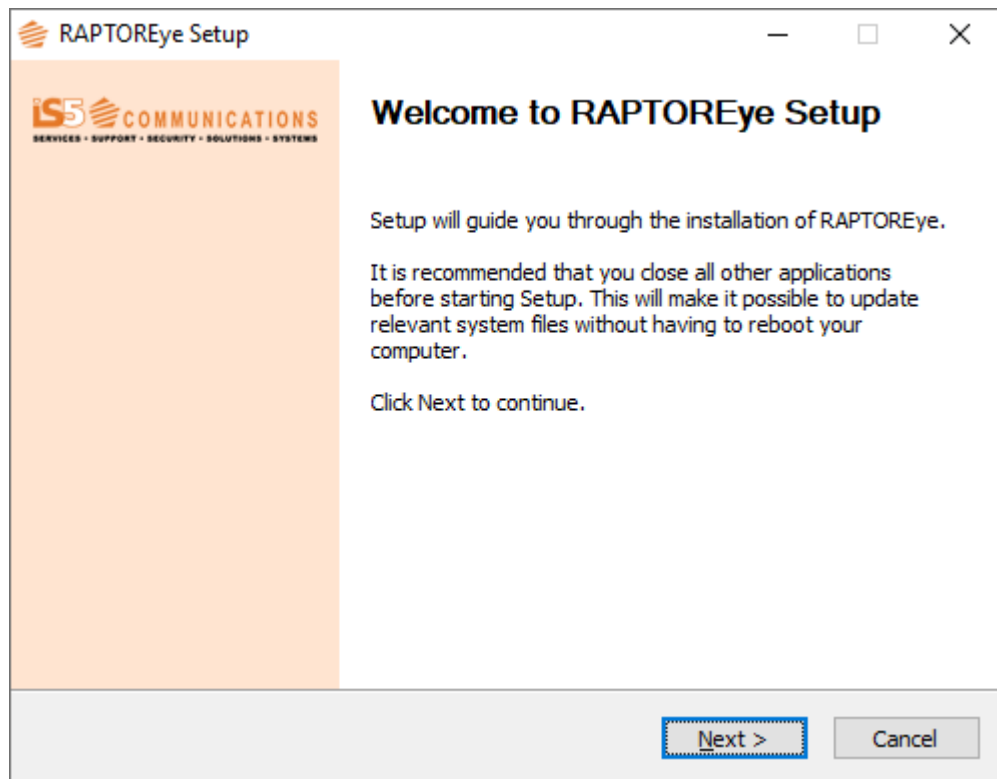
CONTEXT:

The following steps are required to upgrade RAPTOREye.

1. Login as an **Administrator** privileged user to perform the installation or run the Installer using the **Run as Administrator** option.
2. Run the RAPTOREye executable file.

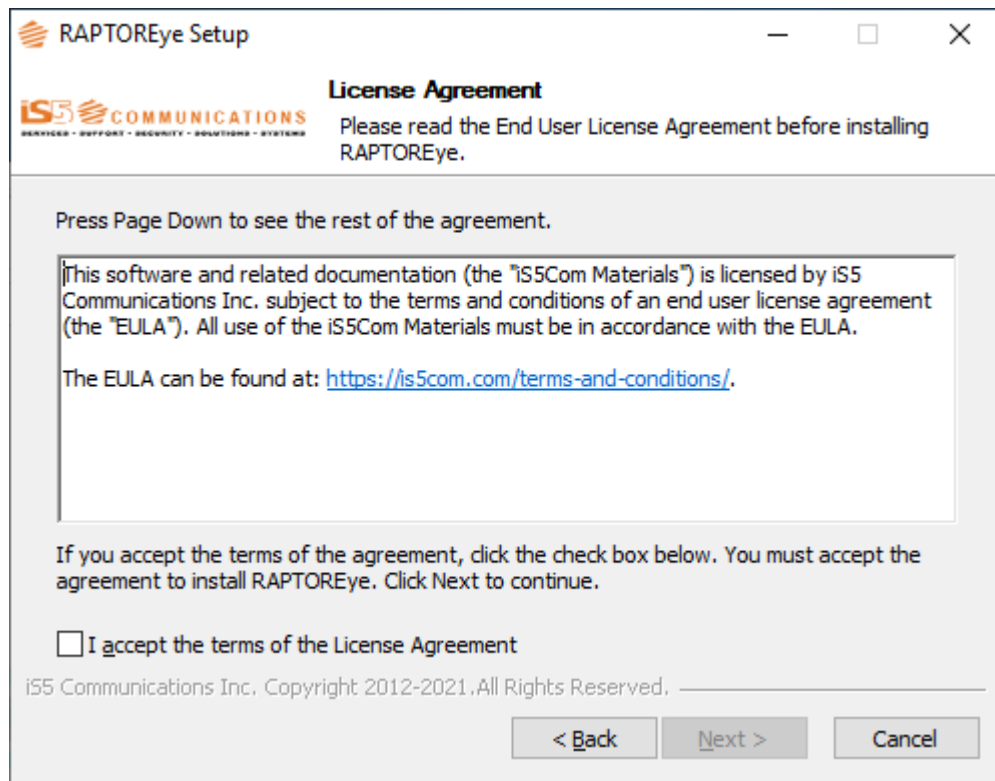
FOR EXAMPLE: RAPTOREye-WindowsInstaller-1.9.0.exe

STEP RESULT: The following image will appear:



3. Click **Next**

STEP RESULT: The following image will appear:

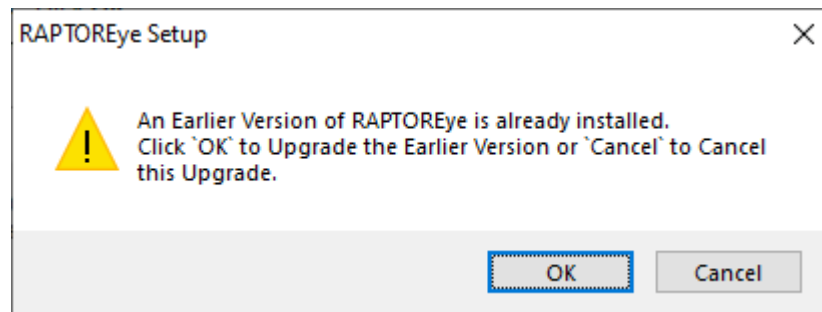


4. Read the License Agreement and **select** the checkbox which says **I accept the terms of the License Agreement**. Click **Next**.

Note:The full RAPTOREye License Agreement can be found at the following URL:

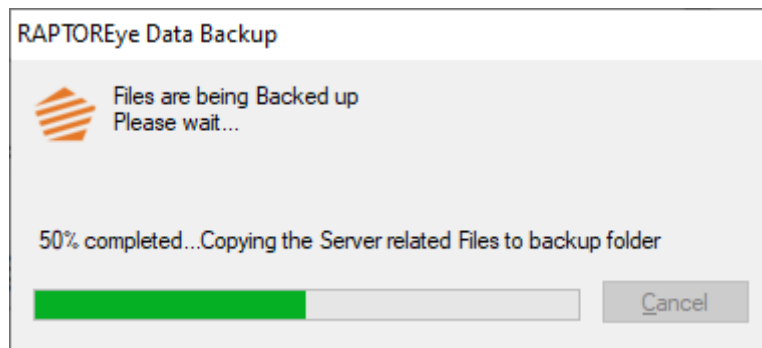
<http://is5com.com/terms-and-conditions/>

STEP RESULT: The following image will appear:



- To proceed with the upgrade, click **OK**.

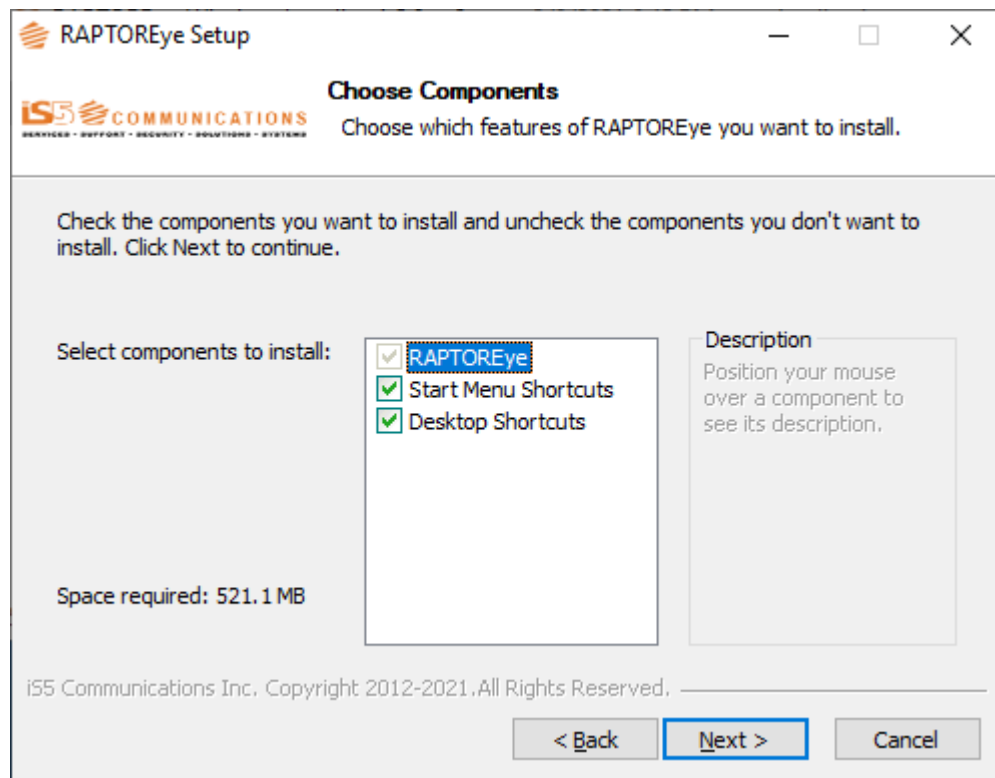
STEP RESULT: The following image will appear:



- After the data has been backed up, uninstallation of the previous version will run as a background process. Once this is complete, the installation wizard will appear.

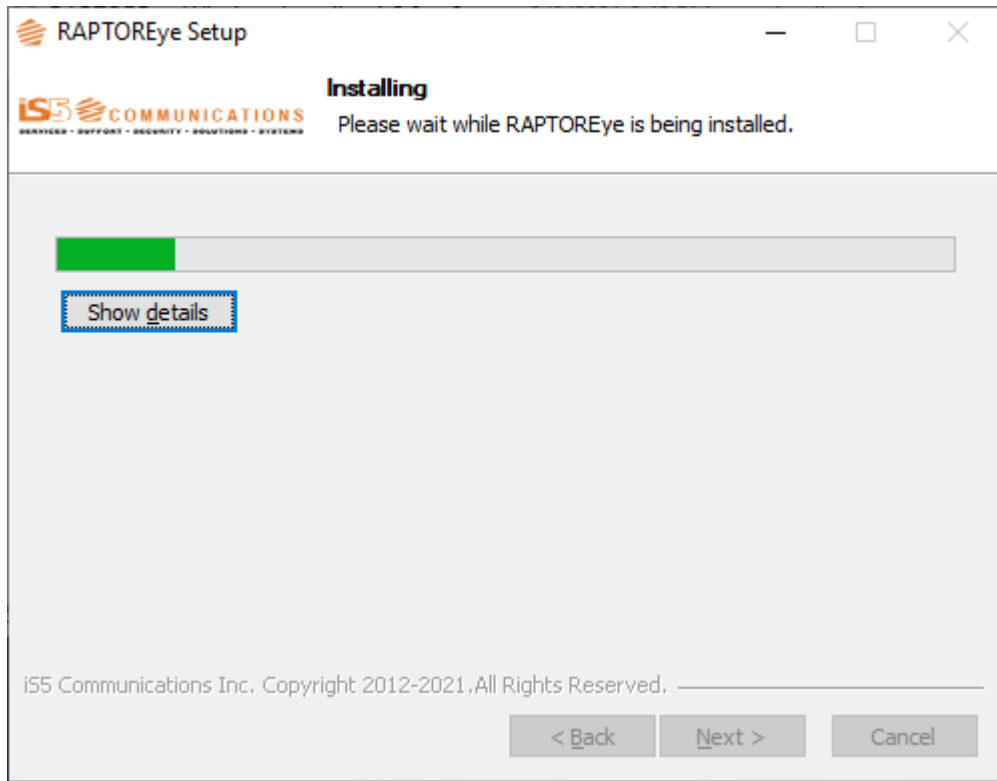
NOTE: This may take a few minutes, please wait.

STEP RESULT: The following image will appear:



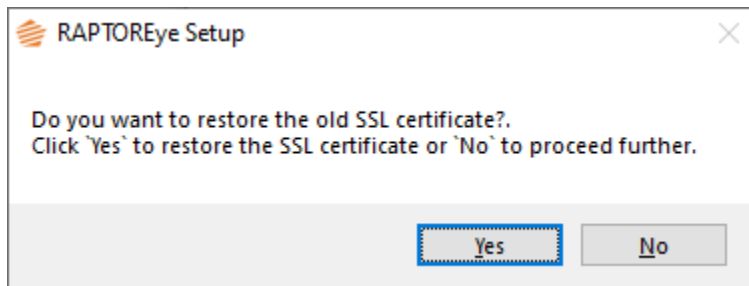
- 7. Click **Next**.

STEP RESULT: The following image will appear:



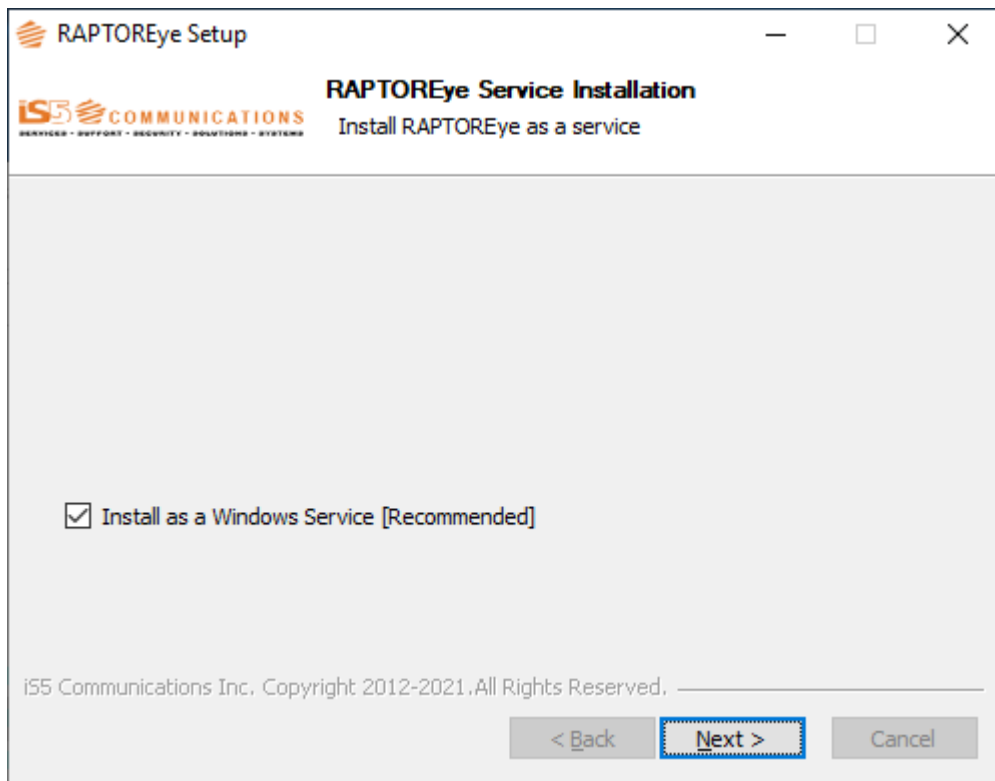
- 8. Once the installation nears completion, a user prompt will appear.

STEP RESULT:



9. Click **Yes** to backup and restore the existing server certificate.

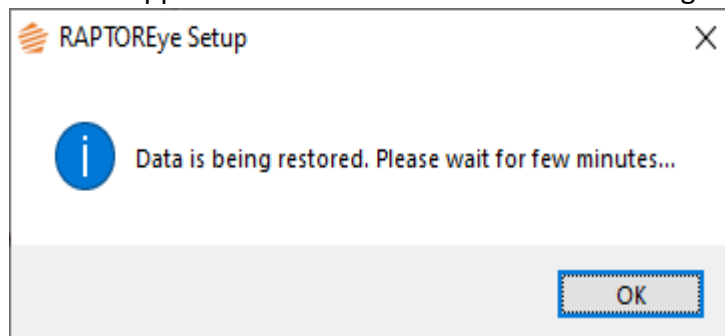
STEP RESULT: A window will appear asking the user if they would like RAPTOREye to run as a service.



10. Click **Next**.

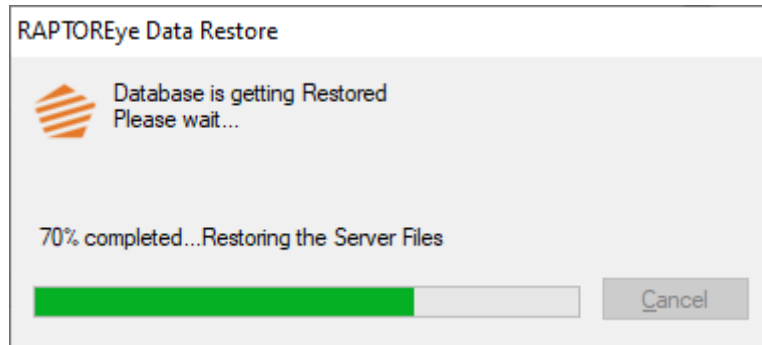
NOTE: It is recommended to choose **Install as a Windows Service**.

STEP RESULT: A window will appear to inform the user that data is being restored.

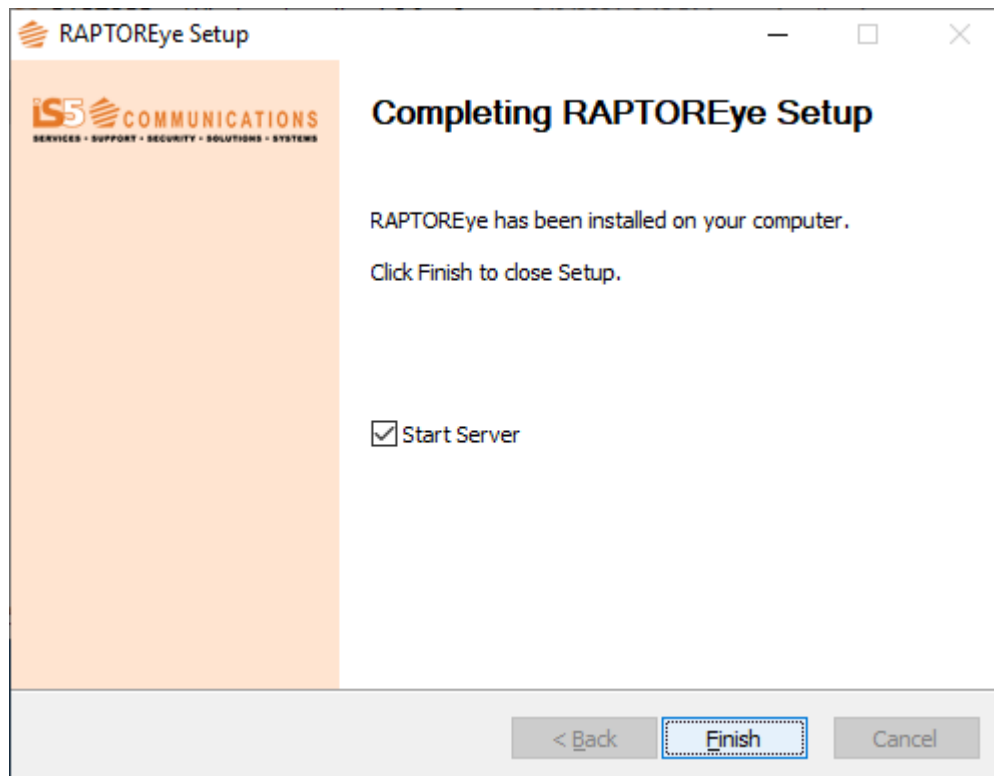


11. Click **OK**.

STEP RESULT: A screen will appear showing that data files will be restored back to the RAPTOREye server. The following screen will appear showing progress:



When the data has completed restoring, the following screen will appear:



12. The upgraded RAPTOREye has been installed. Select **Start Server** if you wish to start the RAPTOREye server now and click **Finish**.

STEP RESULT: The installer window will close and the service will be started in the background if the **Start Server** checkbox was selected.

RESULT:

RAPTOREye has now been successfully upgraded.

6. Start RAPTOREye Server

This section describes how to start the RAPTOR EyeServer on Windows.

CONTEXT:

The following step is required to start the RAPTOREye server:

1. By default, if RAPTOREye is installed as a service, this will automatically start the server once the machine starts; otherwise, the user can use any of the following options to start the server:
 - **Start > All Programs > RAPTOREye > Start RAPTOREye Server** (Run as administrator)
 - **Desktop > Start RAPTOREye Server** (Run as administrator)
 - User can also start RAPTOREye in the local services to start the server (if installed as a service)

Note: This process may take a few minutes to start.

RESULT:

RAPTOR Eye has now been successfully started.

7. Stop RAPTOREye Server

This section describes how to stop the RAPTOREye Server.

CONTEXT:

The following step is required to stop the RAPTOREye server on Windows.

1. To stop the RAPTOREye server, go to **Start > All Programs > RAPTOREye > Stop RAPTOREye Server** (Run as Administrator).

RESULT:

RAPTOREye has now been successfully stopped.