

# RAPTOR EYE®

## NETWORK MANAGEMENT SYSTEM



## Introduction

**RAPTOREye®** is a powerful and comprehensive network management system for monitoring networks. To simplify the management of complex networks, RAPTOREye can be configured with a full complement of Fault, Topology, Performance, and Security features.

RAPTOREye enables network administrators to efficiently monitor status and performance of all devices and pinpoint bottlenecks in real-time. With the advanced Fault Management capabilities, RAPTOREye provides alarm filtering, alarm correlation, and alarm handling features that help administrators isolate and correct problems in the network.

The RAPTOREye user interface has been designed with ease of use in mind and to simplify network administrator's tasks. Navigation between applications is simple and intuitive, with consistent access to reports and screens.

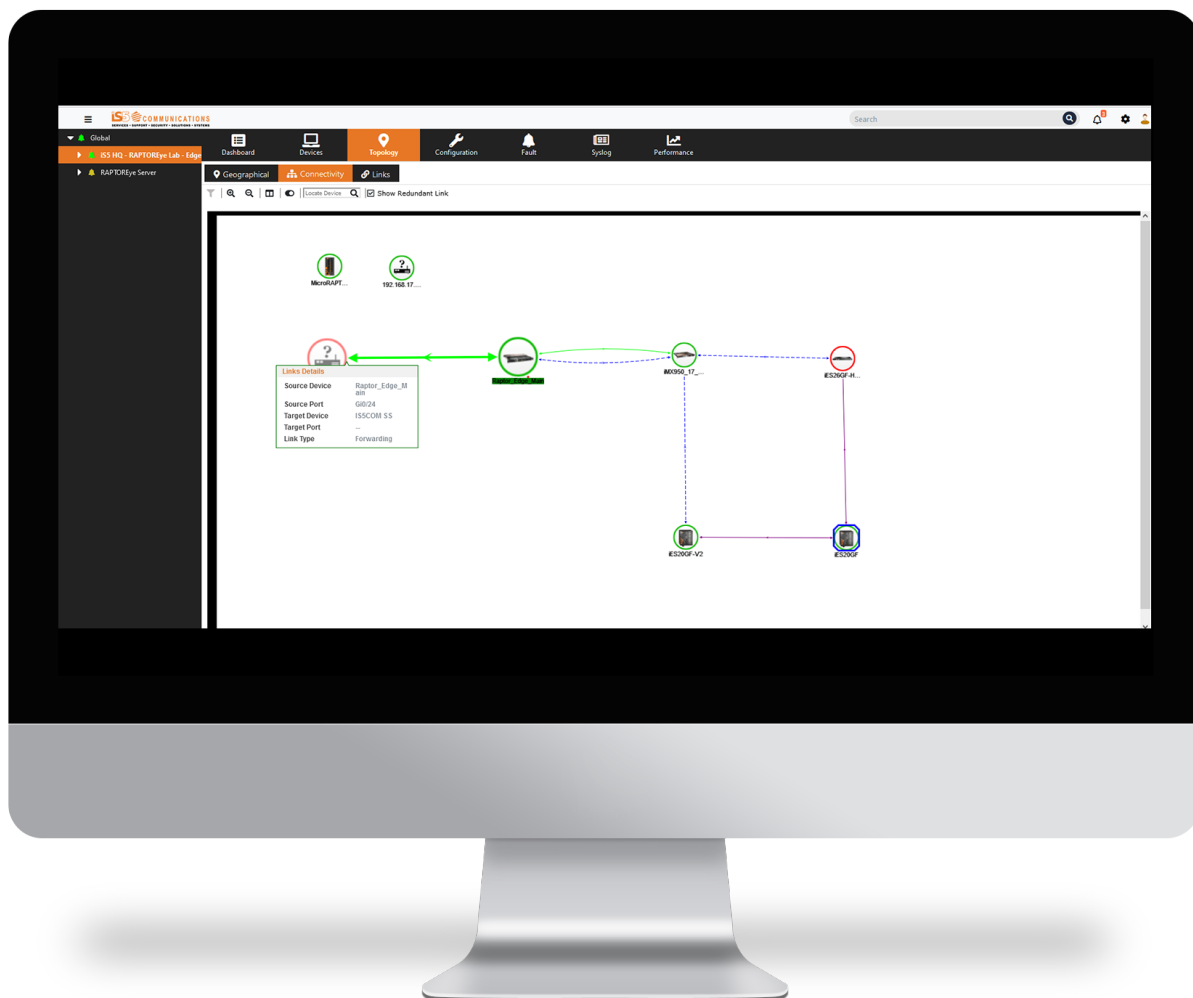
## Features

- Device Discovery
- Topology Visualization with support to show redundant link information
- Chassis View (for supported iS5Com devices only)
- Alarms and Notifications
- Real-time and Historic Device Statistics
- Customizable Dashboards
- User and Group Management
- Role Based Authorization
- Audit Logs
- Scheduled Firmware Upgrades (for RAPTOR family of devices only)
- LDAP Authentication Support
- Configuration Backup and Restore Capability (for RAPTOR family of devices only)
- Open Street Maps and Google Maps Integration

# Topology Display

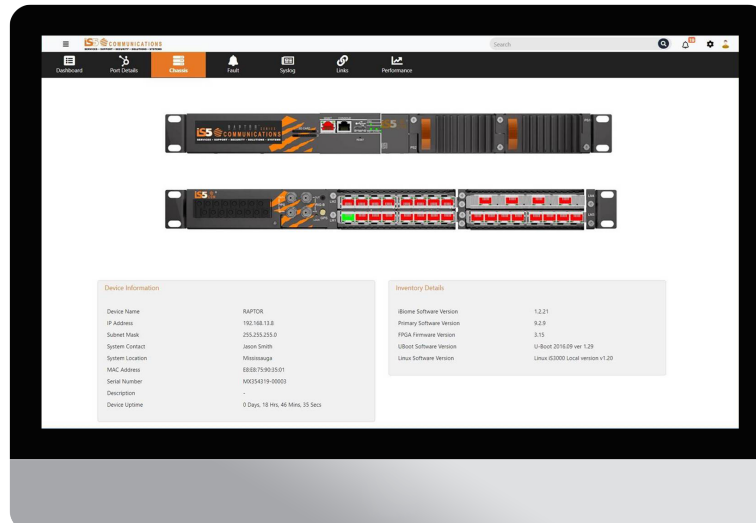
RAPTOREye has the intelligence to automatically discover devices in a network and display network details in multiple views:

1. Open Street Maps and Google Maps Integration
2. An interactive connectivity view showing all devices and the physical connections between them
3. A link view showing details of each link between devices



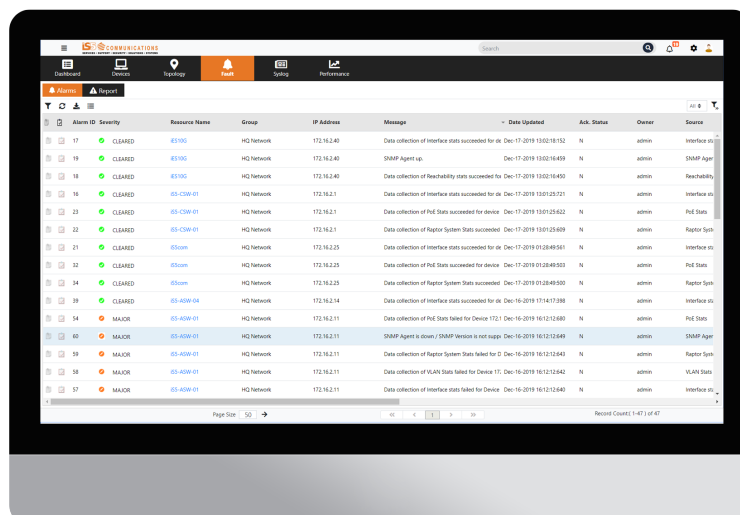
## Chassis View

The chassis view provides an instant physical snapshot of supported iS5Com devices with the real time chassis view. The product image provides a view of each interface, along with asset attributes such as firmware version.



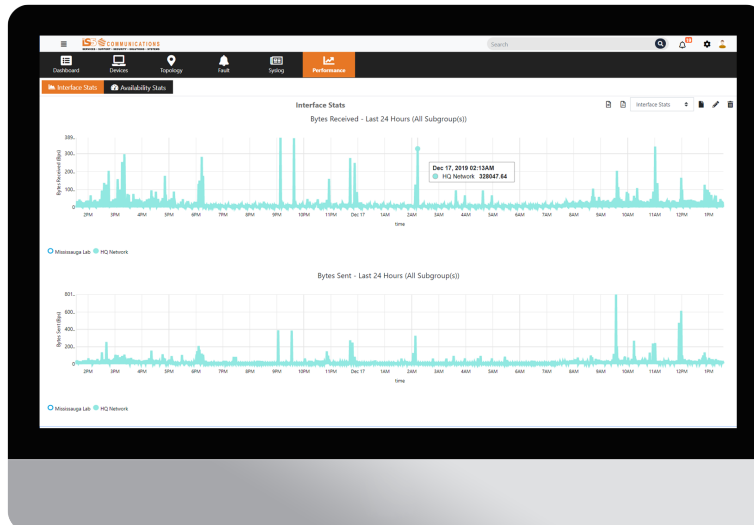
## Fault Reporting

RAPTOREye offers an intuitive GUI for tracking alarms and recording of all faults in the network. It has a built-in interface for managing the faults. RAPTOREye has a range of publishing and display tools including automatic filtering and forwarding of alarms to email for ensuring timely notification of problems.



## Reports

RAPTOREye can monitor multiple key performance metrics continuously for each configured network element and displays the results in multiple report formats for the convenience of the administrators. It can generate reports such as Bytes Received, Bytes Sent, or other key metrics within the defined network. These reports help the administrator to identify quickly the bottlenecks and problems within a specific network.



## Security

RAPTOREye includes extensive security features for user and role management enabling administrators to implement fine-grained security policies with user-friendly access tools and provide appropriate controls over access to network resources. Comprehensive audit logs are built into RAPTOREye providing a detailed history of user actions and system events.

The screenshot displays the RAPTOREye web interface with the 'Security' tab selected. The left sidebar shows 'User Management' and 'Group Management' under 'Audit Trail'. The main content area shows a table of audit logs. The table has columns for 'Module', 'Operations', 'User Name', 'Resource Name', 'Component Name', and 'Date'. The table lists various operations performed by the 'admin' user, including 'Delete Network Element', 'User admin has logged in from IP Address 172.16.31.200', and several 'Purge' operations for different system states (e.g., Prid State, Raptor System State, Vlan State, BMS State, BMS State, Prid State, Raptor System State). The table is paginated, showing 'Page Size: 50' and 'Record Count: 190 of 190'.

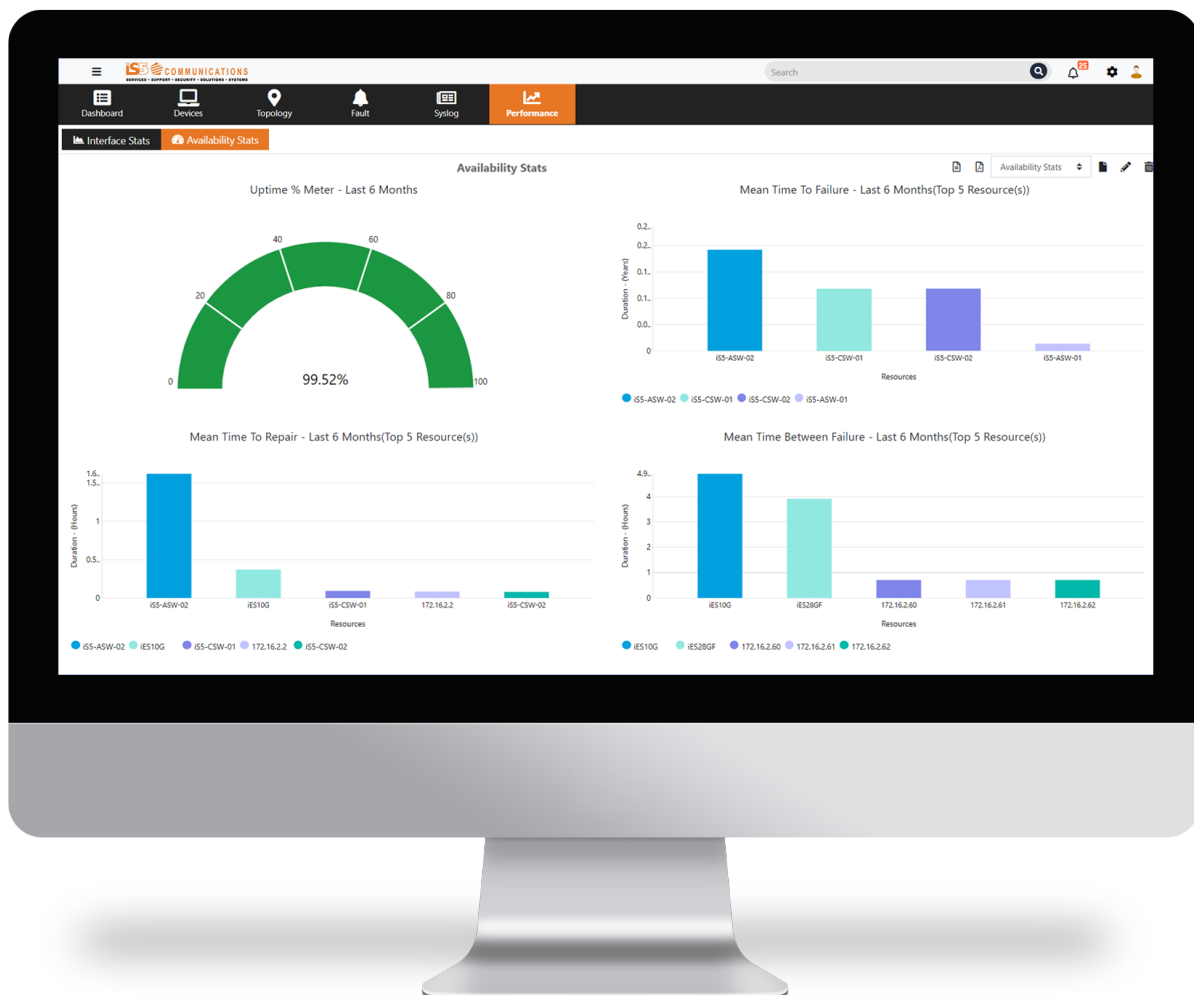
Module	Operations	User Name	Resource Name	Component Name	Date
Topology	Delete Network Element - 0.0.0.0	admin	0.0.0.0	N/A	Dec 17
Security	User admin has logged in from IP Address 172.16.31.200	admin	N/A	N/A	Dec 17
Performance	Purge Prid State hourly records	BMS Server	N/A	N/A	Dec 17
Performance	Purge Prid State hourly records	BMS Server	N/A	N/A	Dec 17
Performance	Purge Raptor System State hourly records	BMS Server	N/A	N/A	Dec 17
Performance	Purge Raptor System State hourly records	BMS Server	N/A	N/A	Dec 17
Performance	Purge Vlan State hourly records	BMS Server	N/A	N/A	Dec 17
Performance	Purge Vlan State hourly records	BMS Server	N/A	N/A	Dec 17
Performance	Purge BMS state hourly records	BMS Server	N/A	N/A	Dec 17
Performance	Purge BMS state hourly records	BMS Server	N/A	N/A	Dec 17
Performance	Purge BMS state hourly records	BMS Server	N/A	N/A	Dec 17
Performance	Purge BMS state hourly records	BMS Server	N/A	N/A	Dec 17
Performance	Purge Prid State hourly records	BMS Server	N/A	N/A	Dec 17
Performance	Purge Prid State hourly records	BMS Server	N/A	N/A	Dec 17
Performance	Purge Raptor System State hourly records	BMS Server	N/A	N/A	Dec 17
Performance	Purge Raptor System State hourly records	BMS Server	N/A	N/A	Dec 17

## SLA Assurance

RAPTOREye generates reports on availability of all configured network elements and makes that data available in intuitive report formats. These availability reports help service providers monitor the availability of all equipment within the network to offer a guaranteed SLA (Service Level Agreement) for the end-customer.

To help administrators narrow down network problems related to specific equipment, RAPTOREye provides availability statistics such as MTTR (Mean time to Repair), MTTF (Mean time to Failure) and MTBF (Mean time between Failures).

RAPTOREye also supports enforcing thresholds of various performance metrics. Using the threshold support, administrators can be warned of performance degradation rapidly and take necessary preventive actions to provide the guaranteed SLA.



## SYSTEM REQUIREMENTS

SERVER OPERATING SYSTEM	CentOS 7 Windows Server 2019 Windows Server 2016 Windows 10
SERVER CONFIGURATION	Processor: Quad Core 2.66 GHz Memory (RAM): 8 GB Disk Space: 100 GB
CLIENT BROWSER	Mozilla Firefox Google Chrome

## Ordering Information

MODEL	PACKAGE	OPERATING SYSTEM	DEVICE COUNT	LICENSE TYPE	DESCRIPTION
RENMS					<b>RAPTOREye Network Management System</b>
	BASE				<b>Base Package</b>
		CENTOS7			<b>CentOS 7</b>
		WS2019			<b>Windows Server 2019 (64 bit)</b>
		WS2016			<b>Windows Server 2016 (64 bit)</b>
		W10			<b>Windows 10 (64 bit)</b>
			10		<b>Maximum of 10 Devices</b>
			20		<b>Maximum of 20 Devices</b>
			50		<b>Maximum of 50 Devices</b>
			100		<b>Maximum of 100 Devices</b>
			200		<b>Maximum of 200 Devices</b>
				1YR	<b>1 Year Term License and Support</b>
				2YR	<b>2 Year Term License and Support</b>
				3YR	<b>3 Year Term License and Support</b>
				T60	<b>60 Day Trial License</b>



**For more information, visit: [is5com.com](http://is5com.com)**

toll free: +1-844-520-0588 | fax: +1-289-401-5206 | [info@is5com.com](mailto:info@is5com.com)

technical support: +1-844-475-8324 | [support@is5com.com](mailto:support@is5com.com)

5895 Ambler Drive. Mississauga, Ontario. L4W 5B7, Canada